

Review Article

# Autologous Hematopoietic Stem Cell Transplantation for Diffuse Large B-Cell Lymphoma

Eisei Kondo

High-dose chemotherapy supported by autologous stem cell support/transplantation (HDT/ASCT) has been a standard of care over the last two decades in patients with relapsed or refractory (R/R) diffuse large B-cell lymphoma (DLBCL), which is sensitive to salvage chemotherapy. HDT/ASCT for high-risk DLBCL in upfront setting remains controversial, so it is not recommended for clinical practice. Various promising salvage chemotherapy regimens have been reported in phase 2 studies; however, two large randomized phase 3 studies showed similar efficacy of R-ICE vs. R-DHAP and R-GDP vs. R-DHAP. Since the registry data shows feasibility and efficacy of HDT/ASCT in elderly R/R DLBCL patients, older age (> 65 years) itself is not a contraindication for HDT/ASCT. Rituximab maintenance failed to demonstrate a significant benefit compared with observation only after HDT/ASCT. While sensitive R/R DLBCL might be cured by HDT/ASCT even in third-line therapy, the prognosis of insensitive R/R DLBCL is extremely poor. Further study to establish treatment strategies for high-risk patients defined by prognostic factors or biomarkers, and insensitive patients is warranted. [*J Clin Exp Hematop* 56(2):100-108, 2016]

**Keywords:** diffuse large B-cell lymphoma (DLBCL), high dose chemotherapy, autologous hematopoietic stem cell transplantation

## INTRODUCTION

Patients with relapsed or refractory (R/R) diffuse large B-cell lymphoma (DLBCL) have a poor outlook with a life expectancy of 3 to 4 months if left untreated.<sup>1</sup> Based on the PARMA study published in 1995, high-dose chemotherapy followed by autologous stem cell transplantation/support (HDT/ASCT) has been the standard of care in R/R DLBCL patients who achieved complete remission (CR) or partial response (PR) after salvage chemotherapy (Fig. 1).<sup>2</sup> At that time, 10% of DLBCL patients were refractory with first-line chemotherapy, and 30-40% of DLBCL patients who responded to first-line chemotherapy relapsed in the pre-rituximab era,<sup>3</sup> meaning that half of DLBCL patients proceeded to salvage chemotherapy.

The addition of rituximab (R) to the first-line treatment (rituximab, cyclophosphamide, doxorubicin, vincristine, and prednisolone [CHOP] or CHOP-like chemotherapy) for DLBCL has resulted in a marked improvement in outcome

for both elderly and young patients.<sup>1,4</sup> Five-year overall survival (OS) was improved from about 50% with chemotherapy alone<sup>3,5</sup> to 75-80% with R-containing chemotherapy.<sup>5,6</sup> Therefore, the rate of primary refractory and relapsed patients was reduced to 4% and 10-20%, respectively.<sup>1</sup> As prognosis of DLBCL patients in whom R-CHOP failed has been reported to be worse than prognosis of those who failed to CHOP alone,<sup>5,7</sup> it is difficult to improve the response rate of salvage chemotherapy in the R-era. In the randomized phase 3 trial for untreated high-risk DLBCL, the benefit of HDT/ASCT at up-front setting was shown in progression free survival, but not in overall survival.<sup>8</sup> HDT/ASCT as consolidation therapy in first-line treatment for DLBCL is therefore not generally recommended at present. In this review, I describe recent research and advances in the treatment strategy of R/R DLBCL patients eligible for HDT/ASCT.

## SALVAGE CHEMOTHERAPY REGIMENS FOR R/R DLBCL

In the PARMA study,<sup>2</sup> the salvage chemotherapy regimen was DHAP (dexamethazone, high-dose cytarabine and cisplatin) with an overall response rate after 2 cycles of 52.7%. The patients who were sensitive to the salvage chemotherapy could proceed to HDT/ASCT if they did not meet ineligible criteria. It is therefore prerequisite to increase the response rate of salvage chemotherapy to improve the prognosis of R/R DLBCL. Various chemotherapy regimens, such

---

Received: February 20, 2016

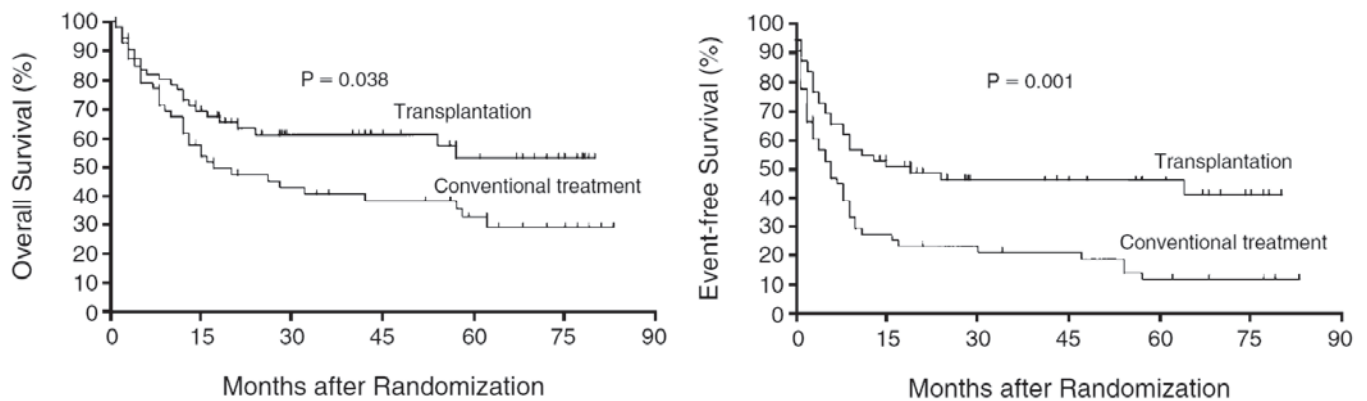
Revised : May 4, 2016

Accepted: June 5, 2016

Department of General Medicine, Okayama University Graduate School of Medicine, Dentistry and Pharmaceutical Sciences, Okayama, Japan

**Corresponding author:** Eisei Kondo, M.D, Ph.D., Department of General Medicine, Okayama University Graduate School of Medicine, Dentistry and Pharmaceutical Sciences, 2-5-1, Shikata, Okayama 700-8558, Japan

E-mail: eisei-k@md.okayama-u.ac.jp



**Fig. 1.** Overall survival (*left*) and event-free survival (*right*) of patients in the transplantation and conventional-treatment groups in the PARMA study. (Philip T, *et al.*, Ref. 2)

**Table 1.** Outcome of salvage chemotherapy regimens for relapsed or refractory aggressive lymphoma patients in phase 2 studies

Regimen	n (DLBCL)	ORR, %	CR, %	OS, %	PFS, %	Transplanted (%)	Reference
DHAP	90	62	34	25 (2 y)	NA	NA	9
ICE	222 (176)	72	28	38 (5 y)	29 (5 y)	149 (67%)	24
R-ICE	28	71	25	72 (1 y)	60 (1 y)	19 (68%)	14
R-ICE	36 (36)	78	53	67 (2 y)	NA	25 (69%)	13
ESHAP	122 (46)	64	37	31 (3 y)	NA	NA	25
R-ESHAP	163 (163)	Re: 67 Rn: 81	Re: 37 Rn: 56	Re: 37 (3 y) Rn: 67 (3 y)	Re: 17 (3 y) Rn: 57 (3 y)	98 (60%)	10
MINE	44	73	41	52 (2 y)	38 (2 y)	35 (77%)	15
CHASER	32 (11)	67	53	39.3 mon	NA	19 (59%)	18
GDP	51 (40)	49	16	NA	NA	22/35 (63%)	19
GEMOX-R	32 (32)	43	34	41 (1 y)	29 (1 y)	NA	26
R-GEMOX	46 (36)	83	50	66 (2 y)	43 (3 y)	NA	21

Re, patients treated with rituximab in previous chemotherapy; Rn, patients not pretreated with rituximab; NA, not applicable; y, year; DLBCL, diffuse large B-cell lymphoma; ORR, overall response rate; CR, complete response; OS, overall survival; PFS, progression-free survival; DHAP, dexamethazone, high-dose cytarabine, and cisplatin; ICE, ifosfamide, carboplatin, and etoposide; R-ICE, rituximab, ifosfamide, carboplatin, and etoposide; ESHAP, etoposide, methylprednisolone, cytarabine, and cisplatin; R-ESHAP, rituximab, etoposide, methylprednisolone, cytarabine, and cisplatin; MINE, mesna, ifosfamide, mitoxantrone, and etoposide; CHASER, cyclophosphamide, high-dose cytarabine, dexamethasone, and etoposide; GDP, gemcitabine, dexamethazone, and cisplatin; GEMOX-R, rituximab, gemcitabine and oxaliplatin; R-GEMOX, rituximab, gemcitabine and oxaliplatin

as ESHAP (etoposide, methylprednisolone, cytarabine and cisplatin),<sup>9-11</sup> ICE (ifosfamide, carboplatin and etoposide),<sup>12-14</sup> MINE (mesna, ifosfamide, mitoxantrone and etoposide),<sup>15</sup> IVAD (ifosfamide, etoposide, cytarabine, and dexamethasone),<sup>16,17</sup> CHASE (cyclophosphamide, high-dose cytarabine, dexamethasone and etoposide),<sup>18</sup> and gemcitabine containing<sup>19-21</sup> have been explored in phase 2 studies and retrospective studies (Table 1). These regimens seemed to be promising because the overall response rate (ORR) was favorable compared with that of the DHAP regimen (52.7%) in the

PARMA study. Another important issue in salvage chemotherapy is the efficiency of hematopoietic stem cell mobilization. Even though granulocyte-colony-stimulating factor after chemotherapy increased mobilization efficiency, mobilization failure (defined as the inability to collect two million CD34<sup>+</sup> cells/kg) occurred in 5-15%.<sup>22</sup> Among these candidate regimens, the ICE regimen, with an ORR of 71-78% in the phase 2 studies,<sup>12-14</sup> was chosen to compare with the DHAP regimen in the multicenter phase III study (CORAL study).<sup>23</sup>

## RANDOMIZED PROSPECTIVE STUDIES OF HDCT IN THE SALVAGE SETTING (1) CORAL STUDY

The CORAL study<sup>23</sup> was designed to evaluate the superiority of the R-ICE regimen with the R-DHAP regimen on the primary endpoint of mobilization adjusted response rate (MARR). The MARR is the composite endpoint of ORR - mobilization failure, meaning the rate of patients who are able to proceed to HDT/ASCT. The MARR was estimated to be 60% (75% ORR - 15% mobilization failure) for R-ICE and 45% (65% ORR - 20% mobilization failure) for the corresponding regimen, R-DHAP. In total, 396 R/R aggressive CD20<sup>+</sup> B-cell non-Hodgkin lymphoma (NHL), including DLBCL, patients were randomized to receive R-ICE or R-DHAP (Table 2). The ORR was similar for the R-ICE arm and the R-DHAP arm at 63.5% (95% confidence interval [CI], 56.8% to 70.7%) and 62.8% (95% CI, 55.6% to 69.7%), respectively. As 20 patients (10%) in the R-ICE arm and 15 patients (8%) in the R-DHAP arm failed to mobilize two million CD34<sup>+</sup> cells/kg, the MARR was not significantly different (52.3% vs. 54.5%) (Table 3). There was no significant difference in the 3-year event-free survival (EFS) (26% in R-ICE and 35% in R-DHAP;  $p = 0.6$ ), the 3-year prog-

ression-free survival (PFS) (31% in R-ICE and 42% in R-DHAP;  $p = 0.4$ ) and the 3-year OS (47% in R-ICE and 51% in R-DHAP;  $p = 0.4$ ). The superiority of the R-ICE regimen was not confirmed in the phase III study.

## RANDOMIZED PROSPECTIVE STUDIES OF HDCT IN THE SALVAGE SETTING (2) NCIC-CTG LY.12 STUDY

The NCIC-CTG LY.12 study<sup>27</sup> was planned to prove the non-inferiority of the GDP (gemcitabine, dexamethasone and cisplatin) regimen compared with the DHAP regimen, which was a different approach from the CORAL study. The GDP regimen has been developed as a salvage treatment for Hodgkin lymphoma and NHL, and the phase 2 study of GDP for R/R DLBCL patients revealed a 49% ORR (16% of CR) with low hematological toxicities.<sup>19</sup> In addition to response rate by arm after two cycles of treatment as the primary endpoint, not only OS, EFS and toxicities, but also quality of life and economic analysis, e.g. requirement of hospitalization, were analyzed. Of 619 enrolled R/R aggressive NHL patients in the LY.12 study, 67.7% were DLBCL (Table 2). For the intention-to-treat population, the response rate with GDP was 45.2% and with DHAP the response rate was

**Table 2.** Comparison of characteristics in the CORAL study and NCIC CTG LY.12 study

	CORAL STUDY <sup>23</sup>	NCIC CTG LY.12 STUDY <sup>27</sup>
Salvage regimen	(R-)ICE vs. (R-)DHAP	(R-)GDP vs (R-)DHAP
Patients number	396 (ICE 202, DHAP 194)	619 (GDP 319, DHAP 309) 419 (GDP 216, DHAP 203)*
Disease	R/R aggressive CD20 <sup>+</sup> B-cell NHL including DLBCL	R/R aggressive lymphoma including DLBCL
Study design	Superiority trial	Non-inferiority trial
First randomization	R-ICE vs R-DHAP	R-GDP vs. R-DHAP
Second randomization	R maintenance after HDT/ASCT	R maintenance after HDT/ASCT
HDT regimen	BEAM	Not defined (mandated by institutional policy)
Primary endpoint	Mobilization-adjusted response rate	Response rate by arm after two cycles of treatment
Age (y), median (range)	55 (19-65)	55.5 (19-74)*
Ann Arbor stage III-IV	240	285 (66%)*
Elevated LDH	198	188 (44%)*
Prior rituximab	244	325 (76%)*
Relapse < 12 mon, refractory relapse ≥ 12 mon	215	180, 133*
	244	116*

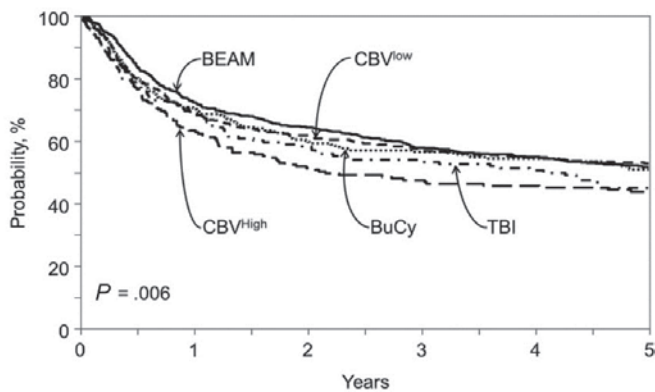
\*, diffuse large B-cell lymphoma subset<sup>28</sup>

HDT, high-dose chemotherapy; LDH, lactate dehydrogenase; R-ICE, rituximab, ifosfamide, carboplatin, and etoposide; R-DHAP, rituximab, dexamethazone, high-dose cytarabine, and cisplatin; R/R, relapsed or refractory; NHL, non-Hodgkin lymphoma; DLBCL, diffuse large B-cell lymphoma; HDT/ASCT, high-dose chemotherapy supported by autologous stem cell support/transplantation; BEAM, BCNU, etoposide, cyclophosphamide, and melphalan; R-GDP, rituximab, gemcitabine, dexamethazone, and cisplatin

**Table 3.** Outcome in the CORAL study<sup>23</sup> and NCIC CTG LY.12 study<sup>27,28</sup>

		N	ORR (%)	CR (+ CRu)	PR (%)	PBSC mobilization failure (%)	HDT/ ASCT rate (%)	EFS (3-year)	OS (3- year)
CORAL	R-ICE	197	125 (63)	72 (36)	53 (27)	20 (10)	101 (51)	26%	47%
	R-DHAP	191	120 (63)	75 (40)	45 (24)	15 (8)	105 (55)	35%	51%
								<i>p</i> = 0.6	<i>p</i> = 0.4
NCIC LY.12	R-GDP	220	103 (47)			32/252 (13)	118 (54)	27% (4-year)	41% (4-year)
(DLBCL subset)	R-DHAP	209	92 (44)				106 (51)		

ORR, overall response rate; CR, complete response; CRu, complete remission uncertain; PR, partial response; PBSC, peripheral blood stem cell; ASCT, autologous stem cell support/transplantation; EFS, event-free survival; OS, overall survival; R-ICE, rituximab, ifosfamide, calboplatin, and etoposide; R-DHAP, rituximab, dexamethazone, high-dose cytarabine, and cisplatin; R-GDP, rituximab, gemcitabine, dexamethazone, and cisplatin



**Fig. 2.** Adjusted probability of overall survival after high-dose chemotherapy supported by autologous stem cell support/transplantation for diffuse large B-cell lymphoma according to conditioning regimen. (Chen YB, *et al.*, Ref. 29)

BEAM, BCNU, etoposide, cyclophosphamide, and melphalan; CBV, cyclophosphamide, BCNU, and etoposide; BuCy, busulfan and cyclophosphamide; TBI, total body irradiation

44.0% (95% CI for difference, -9.0% to 6.7%). The one-sided 95.6% upper confidence bound for each response rate was 5.7%, which did not exceed the pre-specified non-inferiority margin 10% ( $p = 0.005$ ), meaning that the non-inferiority of GDP regimen was established. There was no significant difference in the mobilization efficiency of peripheral hematopoietic stem cells (87.9% with GDP vs. 82.2% with DHAP,  $p = 0.14$ ) and transplantation rate (52.1% with GDP vs. 49.3% with DHAP,  $p = 0.44$ ). Patients receiving GDP experienced less grade 3/4 toxicity (47% vs. 61%), including febrile neutropenia (9% vs. 23%), platelet transfusion during the first two treatment cycles (18% vs. 32%) and adverse events requiring hospitalization (18% vs. 30%).

In the DLBCL subset ( $n = 429$ ),<sup>28</sup> the response rate of both arms were similar (GDP 47% (103/220 patients) vs. DHAP 44% (92/209 patients) (Table 3). The 4-year OS and EFS in the total DLBCL group were 41% and 27%,

respectively. Survival was better in patients who underwent HDT/ASCT ( $n = 224$ , 4-year OS 63%, and EFS 46%). The GDP regimen was non-inferior with respect to response rate to the DHAP regimen, and showed similar results for rates of transplantation and event-free survival. In addition, GDP resulted in less toxicity and was highly cost effective compared with DHAP.

### CONDITIONING REGIMENS OF HDT/ASCT

The most common high-dose chemotherapy regimen used is the BEAM regimen (BCNU, etoposide, cyclophosphamide, and melphalan); however, no randomized data is available to demonstrate superiority of the BEAM regimen. The Center for International BMT Research (CIBMTR) has recently analyzed HDT regimens prior to ASCT in a total of 4917 lymphoma patients.<sup>29</sup> In DLBCL, BEAM, CBV (cyclophosphamide, BCNU, and etoposide), BuCy (busulfan and cyclophosphamide) and total body irradiation-containing regimens were conducted in 735, 662, 279 and 161 patients, respectively. The CBV regimen was subdivided into CBV<sup>low</sup> (app. 300 mg/m<sup>2</sup> of BCNU;  $n = 472$ ) and CBV<sup>high</sup> (app. 450 mg/m<sup>2</sup> of BCNU;  $n = 190$ ). The incidence of treatment related mortality (TRM) at 1 year was 4-8%, and was not significantly different for each regimen. There was no significant difference in PFS or progression/relapse rate at 3 years among these groups. OS at 3 years was also comparable for BEAM (58%), CBV<sup>low</sup> (55%), BuCy (52%) and the total body irradiation-containing regimen (47%), but not for CBV<sup>high</sup> (42%) (Fig. 2). The incidence of idiopathic pneumonia syndrome, a fatal toxicity of HDT, was significantly higher in CBV<sup>high</sup>, demonstrating that CBV<sup>high</sup> was associated with a higher mortality than BEAM (hazard ratio, 1.44,  $p = 0.001$ ) in DLBCL.

In countries and regions where BCNU is not available, various alternative HDT regimens are used. MCEC (MCNU, carboplatin, etoposide, cyclophosphamide),<sup>30</sup> LEED (L-PAM, etoposide, cyclophosphamide, and dexa-

methazone)<sup>31</sup> and MEAM (BEAM modified regimen using MCNU)<sup>32</sup> are common HDT regimens in Japan, and the LEAM (BEAM modified using CCNU)<sup>33</sup> regimen was reported from India.

In an attempt to reduce the risk of common toxicity in HDT, e.g. lung injury, bendamustine instead of BCNU, with Etoposide, Cytarabine, Melphalan (BeEAM) has been developed in a phase 1-2 study.<sup>34</sup> In forty-three patients with resistant/relapsed NHL (n = 28) or Hodgkin lymphoma (n = 15) 14 patients (33%) were in second or further CR, 22 patients (51%) were in partial response and 7 patients (16%) did not respond to the salvage chemotherapy. After a median follow-up of 18 months from transplantation, the outcome was good, as 35 patients (81%) are alive and disease-free. The TRM within 100 days was, of note, 0%. The BeEAM regimen is currently being tested in a Phase 3 study with the BEAM regimen.

Addition of radioactive conjugated anti-CD20 antibody to the HDT regimen is another approach to improving the outcome in R/R DLBCL. In a phase 3 study with either iodine-131 tositumomab plus BEAM (B-BEAM) or BEAM regimen in 224 patients with R/R DLBCL, there was no significant difference between 2 year PFS (48.6% vs. 47.9%) and 2-year OS (65.6% vs. 61%) for BEAM and B-BEAM, respectively. The TRM within 100 days was similar in BEAM (4.1%) and B-BEAM (4.9%).<sup>35</sup> In meta-analysis of ten studies with BEAM, including Yttrium-90-ibritumomab tiuxetan (Z-BEAM), the 2-year OS and PFS were 84.5% (n = 328) and 67.2% (n = 285), respectively. Moreover, the TRM rate was 6.3% and the incidence rate of myelodysplastic syndrome was 2.5%.<sup>36</sup> The meta-analysis concluded that Z-BEAM is safe and effective as a conditioning regimen in relapsed/refractory DLBCL.<sup>36</sup>

## PROGNOSTIC FACTORS OF HDT/ASCT

In the PARMA study, International Prognostic Index (IPI) at relapse<sup>37</sup> and early relapse (relapse within 12 months from diagnosis)<sup>37</sup> were identified as prognostic factors of R/R aggressive lymphoma patients who underwent HDT/ASCT. Of note, both prognostic factors were again identified in the CORAL study. In multivariate analysis, ORR, 3-year EFS and 3-year OS were affected by early relapse (ORR, 46% vs. 88%,  $p < 0.001$ ; 3-year EFS, 20% vs. 45%,  $p < 0.001$ ; 3-year OS, 39% vs. 64%,  $p < 0.001$ ), high secondary age adjusted IPI (saaIPI) (ORR, 52% vs. 71%,  $p < 0.001$ ; 3-year EFS, 18% vs. 40%,  $p < 0.001$ ; 3-year OS, 32% vs. 62%,  $p < 0.001$ ) and prior rituximab (ORR, 51% vs. 83%,  $p < 0.001$ ; 3-year EFS, 21% vs. 47%,  $p < 0.001$ ; 3-year OS, 40% vs. 66%,  $p < 0.01$ ).<sup>38</sup>

In an attempt to understand the biologic basis for the outcomes of R/R DLBCL patients, biomarkers were analyzed as a subsequent analysis of the CORAL study.<sup>39</sup> Using

histologic material of 249 out of 396 patients in the CORAL study, the patient data were analyzed by immunochemistry for CD10, BCL6, MUM1, FOXP1, and BCL2 expression, and fluorescent *in situ* hybridization for BCL2, BCL6 and c-MYC breakpoints. Hans algorithm was applied to classify DLBCL into germinal center B-cell (GCB) and non-GCB subtypes.<sup>40</sup> By univariate analysis, *MYC* (8q24) gene rearrangement was the parameter to be correlated with a worse PFS ( $p = 0.02$ ) and a worse OS ( $p = 0.04$ ). Interestingly, patients with GCB DLBCL who were treated with R-DHAP had a better PFS than patients with non-GCB DLBCL (3-year PFS, 52% vs. 32%, respectively;  $p = 0.01$ ). In patients treated with R-ICE, there was no difference between patients with GCB and non-GCB (3-year-PFS, 31% vs. 27%, respectively;  $p = 0.8$ ). Multivariate analysis has shown an independent prognostic impact of the following parameters on PFS: GCB/non-GCB Hans phenotype interaction with treatment ( $p = 0.04$ ), prior rituximab exposure ( $p = 0.0052$ ), saaIPI ( $p = 0.039$ ), and FoxP1 expression ( $p = 0.047$ ). The patients with GCB R/R DLBCL as classified by Hans algorithm seemed to benefit from the R-DHAP regimen. In interim analysis of an ongoing phase 2 study for R/R DLBCL (n = 20), all 8 patients in early relapse (primary refractory or relapse within 1 year after initial diagnosis) did not achieve CR or PR, and therefore could not proceed to HDT/ASCT.<sup>41</sup> A retrospective study has shown double-expressor lymphoma, which overexpresses *MYC* and *BCL2* protein, and a known prognostic factor in untreated DLBCL, was also associated with poorer overall survival in R/R DLBCL.<sup>42</sup> New treatment strategies, e.g. allogeneic HSCT, molecular targeted agent combination therapy seems to be warranted for these high-risk R/R DLBCL patients.

## RITUXIMAB MAINTENANCE AFTER HDT/ASCT

In both phase III studies, CORAL and LY.12, patients who received HDT/ASCT were again randomized for either R maintenance or observation. In the CORAL study, 122 patients received rituximab every 2 months for one year after HDT/ASCT, and 120 patients were left for observation.<sup>38</sup> At a median follow-up of 44 months, the 4-year EFS after HDT/ASCT was 52% and 53% for the rituximab and observation groups, respectively. There was also no significant improvement of PFS (52% vs. 53%) or OS (61% vs. 65%) at four years in the R maintenance group. The factors affecting EFS after HDT/ASCT were early relapse (46% for relapsed disease within 12 months vs. 56% for relapsed disease after 12 months), high saaIPI (37% vs. 61%), prior treatment with rituximab (47% vs. 59%) and male sex (46% vs. 63%). In the multivariate analyses of PFS, saaIPI ( $p < 0.001$ ) and male sex ( $p = 0.01$ ) remained significant prognostic factors. Toxicity was increased by 15% and serious adverse events were reported in the rituximab arm after day 100, the majority of

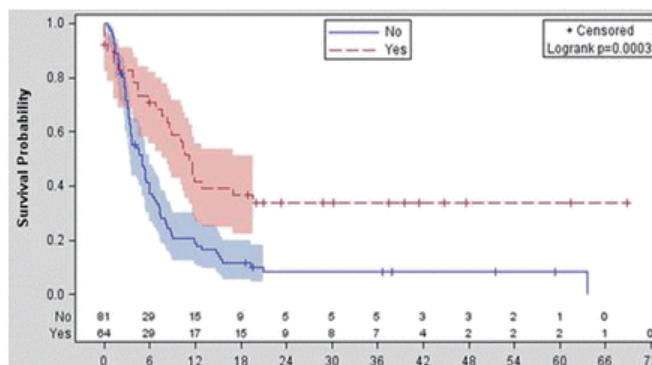
which were infections. Interestingly, the difference in survival between female and male was observed only in the R maintenance arm.

The survival advantage of female sex in R maintenance has been repeatedly reported in the study for follicular lymphoma<sup>43,44</sup> and DLBCL in first line,<sup>45,46</sup> and is explainable by slower clearance of rituximab in females than in males.<sup>47</sup>

In the second randomization of the LY.12 study, the R/R CD20-positive aggressive lymphoma patients after HDT/ASCT were assigned to rituximab 375 mg/m<sup>2</sup> every 2 months for 6 doses (n = 115), or observation (n = 115). Seventeen % of the patients had transformed from previous indolent lymphoma. After a median follow-up of 63 months, 2 year EFS was 64% for the R maintenance group vs. 51% for the observation group ( $p = 0.11$ ) and there was also no difference in 4-year OS (R 69% vs. observation 68%). In multivariable analysis, age > 60 was significantly associated with EFS. Grade 3-4 neutropenia, Grade 3-4 thrombocytopenia and febrile neutropenia was observed more frequently with R maintenance.<sup>27</sup>

### INSENSITIVE R/R DLBCL PATIENTS TO SALVAGE CHEMOTHERAPY

There is no standard treatment strategy for R/R DLBCL patients not responding to salvage chemotherapy, as the data is very limited. Van Den Neste *et al.* recently reported follow-up data in 145 patients who failed to proceed to HDT/ASCT in the CORAL study.<sup>48</sup> In the study, the third-line treatment conducted was ICE-type (19%), DHAP-type (19%), gemcitabine-containing (16%), CHOP-like (8%), dexaBEAM (8%), and miscellaneous (31%) regimens with or without rituximab. ORR was 43%, with 29% CR/complete remission uncertain (CRu) and 14% PR. CR/CRu and PR among patients treated with ICE-type, DHAP-type, gemcitabine-containing, or CHOP-like regimens were 23 and 23%, 35 and 8%, 9 and 4%, 25 and 25%, respectively. Among the 145 patients, 56 patients proceeded to HDT/ASCT and 8 patients were treated by allogeneic hematopoietic stem cell transplantation. At median follow-up of 32.8 months, median OS, calculated from the time of second failure until death, was 5.9 months, and was not influenced by the type of the third-line regimen ( $p = 0.49$ ). Median OS was 11.1 months in patients who were eventually underwent transplantation compared with 3.3 months in those who were not ( $p < 0.0001$ ) (Fig. 3), corresponding to a 2-year OS of 33.9% and 9.3%, respectively. HDT/ASCT is thought to have a role in in-sensitive R/R DLBCL to salvage chemotherapy, if it is sensitive to the third line treatment.



**Fig. 3.** Overall survival from time of treatment failure to CORAL induction according to transplantation performed (yes, n = 64 patients; no, n = 129 patients). (Van den Neste, *et al.*, Ref. 48)

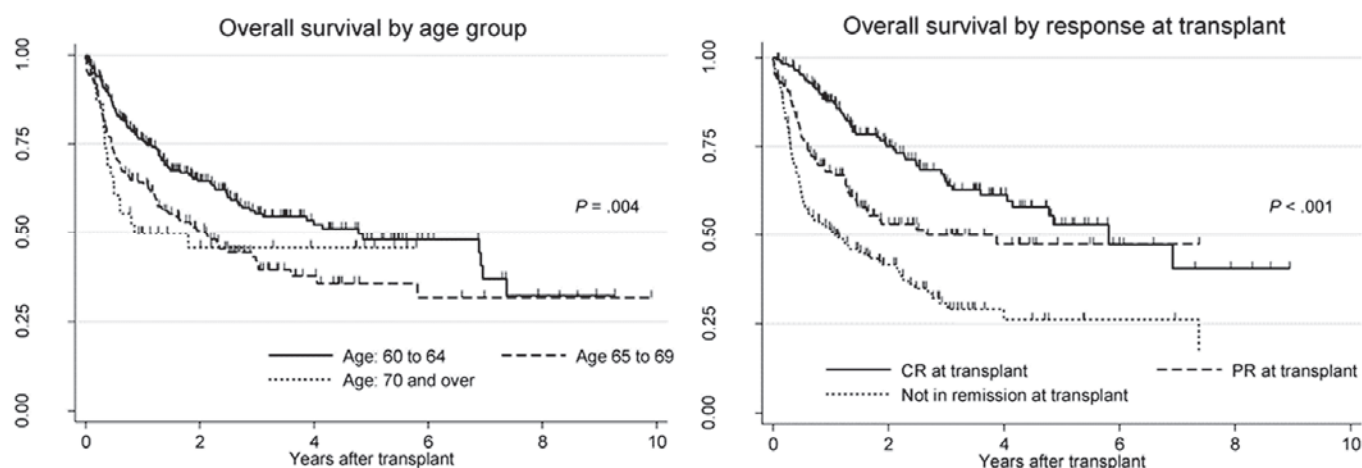
### ELIGIBILITY AGE

Age has been thought to be a factor for eligibility of HDT/ASCT. The upper age limit for the PARMA study and the CORAL study was 60 and 65 years, respectively, and sensitive R/R DLBCL patients over 65 years will not always proceed to HDT/ASCT in practice. It was therefore unclear whether elderly patients could be treated with HDT/ASCT.

In the European Blood and Marrow Transplantation registry data, HDT/ASCT treated DLBCL patients who were  $\geq 60$  years (n = 463) were compared with younger patients (< 60 years; n = 2,149).<sup>49</sup> Non-relapse mortality was higher in elderly patients at 100 days (4.4% vs. 2.8%,  $p = 0.002$ ), and PFS (51% vs. 62%,  $p < 0.001$ ) and OS (60% vs. 70%,  $p < 0.001$ ) at 3 years were significantly poorer for elderly patients. Similar findings were reported from the registry of Japanese Society of Hematopoietic Cell Transplantation.<sup>50</sup> In a total of 484 R/R DLBCL patients aged 60 years or older, who underwent HDT/ASCT, the two-year OS of patients ages 60 to 64, 65 to 69, and 70 years or older was 64.6%, 50.6% and 45.7%, respectively, and was significantly better in patients ages 60 to 64 years ( $p = 0.01$ ) (Fig. 4) The outcome of HDT/ASCT in elderly R/R DLBCL patients is not as good as in younger patients; however, HDT/ASCT is feasible and effective in selected elderly patients, taking the overall poorer outcome of elderly R/R DLBCL patients into account. Older age (> 65 years), in and of itself, is not a contraindication for autologous SCT as long as the other SCT eligibility criteria are met.<sup>51</sup>

### CONCLUSION

While HDT/ASCT is still the standard of care for sensitive R/R DLBCL in the R-era, only half of R/R DLBCL patients are able to proceed to HDT/ASCT. To improve the outcome of R/R DLBCL, it is essential to identify high-risk patients by prognostic factors and biomarkers, and establish



**Fig. 4.** Overall survival by age group (left) and overall survival by response status (right) at transplantation. (Chihara D, *et al.*, Ref. 50) CR, complete response; PR, partial response

treatment strategies for high-risk and insensitive patients. As the efficacy of conventional chemotherapy in high-risk patients is limited, combination with other treatment modalities, such as molecular targeted agents and allogeneic hematopoietic stem cell transplantation, may be required.

#### DISCLOSURE STATEMENT

The author declares that there are no conflicts of interest regarding the present paper.

#### REFERENCES

- Pfreundschuh M, Trümper L, Osterborg A, Pettengell R, Trneny M, *et al.*: CHOP-like chemotherapy plus rituximab versus CHOP-like chemotherapy alone in young patients with good-prognosis diffuse large-B-cell lymphoma: a randomised controlled trial by the MabThera International Trial (MInT) Group. *Lancet Oncol* 7:379-391, 2006
- Philip T, Guglielmi C, Hagenbeek A, Somers R, Van der Lelie H, *et al.*: Autologous bone marrow transplantation as compared with salvage chemotherapy in relapses of chemotherapy-sensitive non-Hodgkin's lymphoma. *N Engl J Med* 333:1540-1545, 1995
- Fisher RI, Miller TP, O'Connor OA: Diffuse aggressive lymphoma. *Hematology Am Soc Hematol Educ Program* 221-236, 2004
- Coiffier B, Lepage E, Briere J, Herbrecht R, Tilly H, *et al.*: CHOP chemotherapy plus rituximab compared with CHOP alone in elderly patients with diffuse large-B-cell lymphoma. *N Engl J Med* 346:235-242, 2002
- Sehn LH, Gascoyne RD: Diffuse large B-cell lymphoma: optimizing outcome in the context of clinical and biologic heterogeneity. *Blood* 125:22-32, 2015
- Zhou Z, Sehn LH, Rademaker AW, Gordon LI, Lacasse AS, *et al.*: An enhanced International Prognostic Index (NCCN-IPI) for patients with diffuse large B-cell lymphoma treated in the rituximab era. *Blood* 123:837-842, 2014
- Chen YB, Hochberg EP, Feng Y, Neuberg D, Rawal B, *et al.*: Characteristics and outcomes after autologous stem cell transplant for patients with relapsed or refractory diffuse large B-cell lymphoma who failed initial rituximab, cyclophosphamide, adriamycin, vincristine, and prednisone therapy compared to patients who failed cyclophosphamide, adriamycin, vincristine, and prednisone. *Leuk Lymphoma* 51:789-796, 2010
- Stiff PJ, Unger JM, Cook JR, Constine LS, Couban S, *et al.*: Autologous transplantation as consolidation for aggressive non-Hodgkin's lymphoma. *N Engl J Med* 369:1681-1690, 2013
- Velasquez WS, Cabanillas F, Salvador P, McLaughlin P, Fridrik M, *et al.*: Effective salvage therapy for lymphoma with cisplatin in combination with high-dose Ara-C and dexamethasone (DHAP). *Blood* 71:117-122, 1988
- Martín A, Caballero MD; Grupo Español de Linfomas/Trasplante Autólogo de Médula Osea: R-ESHAP as salvage therapy for patients with relapsed or refractory diffuse large B-cell lymphoma: influence of prior autologous stem-cell transplantation on outcome. *Haematologica* 94:744, 2009
- Soussain C, Souleau B, Gabarre J, Zouabi H, Sutton L, *et al.*: Intensive chemotherapy with hematopoietic cell transplantation after ESHAP therapy for relapsed or refractory non-Hodgkin's lymphoma. Results of a single-centre study of 65 patients. *Leuk Lymphoma* 33:543-550, 1999
- Zelenetz AD, Hamlin P, Kewalramani T, Yahalom J, Nimer S, *et al.*: Ifosfamide, carboplatin, etoposide (ICE)-based second-line chemotherapy for the management of relapsed and refractory aggressive non-Hodgkin's lymphoma. *Ann Oncol* 14 (Suppl 1): i5-i10, 2003
- Kewalramani T, Zelenetz AD, Nimer SD, Portlock C, Straus D,

- et al.*: Rituximab and ICE as second-line therapy before autologous stem cell transplantation for relapsed or primary refractory diffuse large B-cell lymphoma. *Blood* 103:3684-3688, 2004
- 14 Vose J, Sneller V: Outpatient regimen rituximab plus ifosfamide, carboplatin and etoposide (R-ICE) for relapsed non-Hodgkin's lymphoma. *Ann Oncol* 14 (Suppl 1): i17-i20, 2003
  - 15 van Besien K, Rodriguez A, Tomany S, Younes A, Donato M, *et al.*: Phase II study of a high-dose ifosfamide-based chemotherapy regimen with growth factor rescue in recurrent aggressive NHL. High response rates and limited toxicity, but limited impact on long-term survival. *Bone Marrow Transplant* 27:397-404, 2001
  - 16 Miura K, Takei K, Kobayashi S, Kiso S, Hirabayashi Y, *et al.*: An effective salvage treatment using ifosfamide, etoposide, cytarabine, dexamethasone, and rituximab (R-IVAD) for patients with relapsed or refractory aggressive B-cell lymphoma. *Int J Hematol* 94:90-96, 2011
  - 17 Schütt P1, Passon J, Ebeling P, Welt A, Müller S, *et al.*: Ifosfamide, etoposide, cytarabine, and dexamethasone as salvage treatment followed by high-dose cyclophosphamide, melphalan, and etoposide with autologous peripheral blood stem cell transplantation for relapsed or refractory lymphomas. *Eur J Haematol* 78:93-101, 2007
  - 18 Oki Y, Ogura M, Kato H, Kikuchi A, Taji H, *et al.*: Phase II study of a salvage regimen using cyclophosphamide, high-dose cytarabine, dexamethasone, etoposide, and rituximab in patients with relapsed or refractory B-cell non-Hodgkin's lymphoma. *Cancer Sci* 99:179-184, 2008
  - 19 Crump M, Baetz T, Couban S, Belch A, Marcellus D, *et al.*: Gemcitabine, dexamethasone, and cisplatin in patients with recurrent or refractory aggressive histology B-cell non-Hodgkin lymphoma: a Phase II study by the National Cancer Institute of Canada Clinical Trials Group (NCIC-CTG). *Cancer* 101:1835-1842, 2004
  - 20 López A, Gutiérrez A, Palacios A, Blancas I, Navarrete M, *et al.*: GEMOX-R regimen is a highly effective salvage regimen in patients with refractory/relapsing diffuse large-cell lymphoma: a phase II study. *Eur J Haematol* 80:127-132, 2008
  - 21 El Gnaoui T, Dupuis J, Belhadj K, Jais JP, Rahmouni A, *et al.*: Rituximab, gemcitabine and oxaliplatin: an effective salvage regimen for patients with relapsed or refractory B-cell lymphoma not candidates for high-dose therapy. *Ann Oncol* 18:1363-1368, 2007
  - 22 Sheppard D, Bredeson C, Allan D, Tay J: Systematic review of randomized controlled trials of hematopoietic stem cell mobilization strategies for autologous transplantation for hematologic malignancies. *Biol Blood Marrow Transplant* 18:1191-1203, 2012
  - 23 Gisselbrecht C, Glass B, Mounier N, Singh Gill D, Linch DC, *et al.*: Salvage regimens with autologous transplantation for relapsed large B-cell lymphoma in the Rituximab era. *J Clin Oncol* 28:4184-4190, 2010
  - 24 Zelenetz AD, Hamlin P, Kewalramani T, Yahalom J, Nimer S, *et al.*: Ifosfamide, carboplatin, etoposide (ICE)-based second-line chemotherapy for the management of relapsed and refractory aggressive non-Hodgkin's lymphoma. *Ann Oncol* 14 (Suppl 1):i5-i10, 2003
  - 25 Velasquez WS, McLaughlin P, Tucker S, Hagemester FB, Swan F, *et al.*: ESHAP--an effective chemotherapy regimen in refractory and relapsing lymphoma: a 4-year follow-up study. *J Clin Oncol* 12:1169-1176, 1994
  - 26 López A, Gutiérrez A, Palacios A, Blancas I, Navarrete M, *et al.*: GEMOX-R regimen is a highly effective salvage regimen in patients with refractory/relapsing diffuse large-cell lymphoma: a phase II study. *Eur J Haematol* 80:127-132, 2008
  - 27 Crump M, Kuruvilla J, Couban S, MacDonald DA, Kukreti V, *et al.*: Randomized comparison of gemcitabine, dexamethasone, and cisplatin versus dexamethasone, cytarabine, and cisplatin chemotherapy before autologous stem-cell transplantation for relapsed and refractory aggressive lymphomas: NCIC-CTG LY12. *J Clin Oncol* 32:3490-3496, 2014
  - 28 Kuruvilla J, MacDonald DA, Kouroukis CT, Cheung M, Olney HJ, *et al.*: Salvage chemotherapy and autologous stem cell transplantation for transformed indolent lymphoma: a subset analysis of NCIC CTG LY12. *Blood* 126:733-738, 2015
  - 29 Chen YB, Lane AA, Logan BR, Zhu X, Akpek G, *et al.*: Impact of conditioning regimen on outcomes for patients with lymphoma undergoing high-dose therapy with autologous hematopoietic cell transplantation. *Biol Blood Marrow Transplant* 21:1046-1053, 2015
  - 30 Kamezaki K, Kikushige Y, Numata A, Miyamoto T, Takase K, *et al.*: Rituximab does not compromise the mobilization and engraftment of autologous peripheral blood stem cells in diffuse-large B-cell lymphoma. *Bone Marrow Transplant* 39:523-527, 2007
  - 31 Ogura M, Kagami Y, Taji H, Suzuki R, Miura K, *et al.*: Pilot phase I/II study of new salvage therapy (CHASE) for refractory or relapsed malignant lymphoma. *Int J Hematol* 77:503-511, 2003
  - 32 Kawabata KC, Hagiwara S, Takenouchi A, Tanimura A, Tanuma J, *et al.*: Autologous stem cell transplantation using MEAM regimen for relapsed AIDS-related lymphoma patients who received highly active anti-retroviral therapy: a report of three cases. *Intern Med* 48:111-114, 2009
  - 33 Sharma A, Kayal S, Iqbal S, Malik PS, Raina V: Comparison of BEAM vs. LEAM regimen in autologous transplant for lymphoma at AIIMS. *Springerplus* 2:489, 2013
  - 34 Visani G, Malerba L, Stefani PM, Capria S, Galieni P, *et al.*: BeEAM (bendamustine, etoposide, cytarabine, melphalan) before autologous stem cell transplantation is safe and effective for resistant/relapsed lymphoma patients. *Blood* 118:3419-3425, 2011
  - 35 Vose JM, Carter S, Burns LJ, Ayala E, Press OW, *et al.*: Phase III randomized study of rituximab/carmustine, etoposide, cytarabine, and melphalan (BEAM) compared with iodine-131 tositumomab/BEAM with autologous hematopoietic cell



- transplantation for relapsed diffuse large B-cell lymphoma: results from the BMT CTN 0401 trial. *J Clin Oncol* 31:1662-1668, 2013
- 36 Auger-Quittet S, Duny Y, Daures JP, Quittet P: Outcomes after (90) Yttrium-ibritumomab tiuxetan-BEAM in diffuse large B-cell lymphoma: a meta-analysis. *Cancer Med* 3:927-938, 2014
  - 37 Blay J, Gomez F, Sebban C, Bachelot T, Biron P, *et al.*: The International Prognostic Index correlates to survival in patients with aggressive lymphoma in relapse: analysis of the PARMA trial. Parma Group. *Blood* 92:3562-3568, 1998
  - 38 Gisselbrecht C, Schmitz N, Mounier N, Singh Gill D, Linch DC, *et al.*: Rituximab maintenance therapy after autologous stem-cell transplantation in patients with relapsed CD20<sup>+</sup> diffuse large B-cell lymphoma: final analysis of the collaborative trial in relapsed aggressive lymphoma. *J Clin Oncol* 30:4462-4469, 2012
  - 39 Thieblemont C, Briere J, Mounier N, Voelker HU, Cuccuini W, *et al.*: The germinal center/activated B-cell subclassification has a prognostic impact for response to salvage therapy in relapsed/refractory diffuse large B-cell lymphoma: a bio-CORAL study. *J Clin Oncol* 29:4079-4087, 2011
  - 40 Hans CP, Weisenburger DD, Greiner TC, Gascoyne RD, Delabie J, *et al.*: Confirmation of the molecular classification of diffuse large B-cell lymphoma by immunohistochemistry using a tissue microarray. *Blood* 103:275-282, 2004
  - 41 Kondo E, Yamamoto K, Masunari T, Miura K, Takizawa T, *et al.*: Interim analysis of an ongoing phase II trial assessing safety and efficacy of R-IDEA as salvage therapy in patients with relapsed/refractory DLBCL. *Ann Oncol* 25 (suppl 4):iv327-iv339, 2014
  - 42 Miura K, Takahashi H, Nakagawa M, Izu A, Sugitani M, *et al.*: Clinical significance of co-expression of MYC and BCL2 protein in aggressive B-cell lymphomas treated with a second line immunochemotherapy. *Leuk Lymphoma* 57:1335-1341, 2016
  - 43 Salles G, Seymour JF, Offner F, López-Guillermo A, Belada D, *et al.*: Rituximab maintenance for 2 years in patients with high tumour burden follicular lymphoma responding to rituximab plus chemotherapy (PRIMA): a phase 3, randomised controlled trial. *Lancet* 377:42-51, 2011
  - 44 Jager U, Fridrik M, Zeitlinger M, Heintel D, Hopfinger G, *et al.*: Rituximab serum concentrations during immuno-chemotherapy of follicular lymphoma correlate with patient gender, bone marrow infiltration and clinical response. *Haematologica* 97:1431-1438, 2012
  - 45 Haioun C, Mounier N, Emile JF, Ranta D, Coiffier B, *et al.*: Rituximab versus observation after high-dose consolidative first-line chemotherapy with autologous stem-cell transplantation in patients with poor-risk diffuse large B-cell lymphoma. *Ann Oncol* 20:1985-1992, 2009
  - 46 Müller C, Murawski N, Wiesen MH, Held G, Poeschel V, *et al.*: The role of sex and weight on rituximab clearance and serum elimination half-life in elderly patients with DLBCL. *Blood* 119:3276-3284, 2012
  - 47 Pfreundschuh M, Müller C, Zeynalova S, Kuhnt E, Wiesen MH, *et al.*: Suboptimal dosing of rituximab in male and female patients with DLBCL. *Blood* 123:640-646, 2014
  - 48 Van Den Neste E, Schmitz N, Mounier N, Gill D, Linch D, *et al.*: Outcome of patients with relapsed diffuse large B-cell lymphoma who fail second-line salvage regimens in the International CORAL study. *Bone Marrow Transplant* 51:51-57, 2016
  - 49 Jantunen E, Canals C, Rambaldi A, Ossenkoppele G, Allione B, *et al.*: Autologous stem cell transplantation in elderly patients (> or = 60 years) with diffuse large B-cell lymphoma: an analysis based on data in the European Blood and Marrow Transplantation registry. *Haematologica* 93:1837-1842, 2008
  - 50 Chihara D, Izutsu K, Kondo E, Sakai R, Mizuta S, *et al.*: High-dose chemotherapy with autologous stem cell transplantation for elderly patients with relapsed/refractory diffuse large B cell lymphoma: a nationwide retrospective study. *Biol Blood Marrow Transplant* 20:684-689, 2014
  - 51 Oliansky DM, Czuczman M, Fisher RI, Irwin FD, Lazarus HM, *et al.*: The role of cytotoxic therapy with hematopoietic stem cell transplantation in the treatment of diffuse large B cell lymphoma: update of the 2001 evidence-based review. *Biol Blood Marrow Transplant* 17:20-47 e30, 2011